

# MONTHLY MEMBERSHIP PROGRESS REPORT

District 2 X3

Results as of: 5/31/2024

GMT:

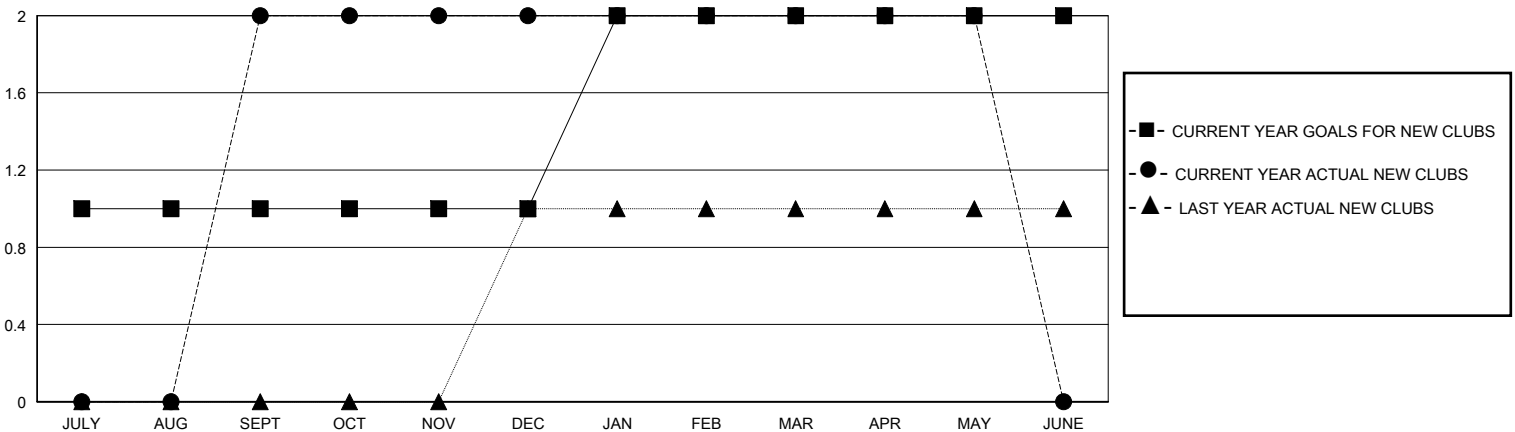
LOCATION TEXAS

GMT CA

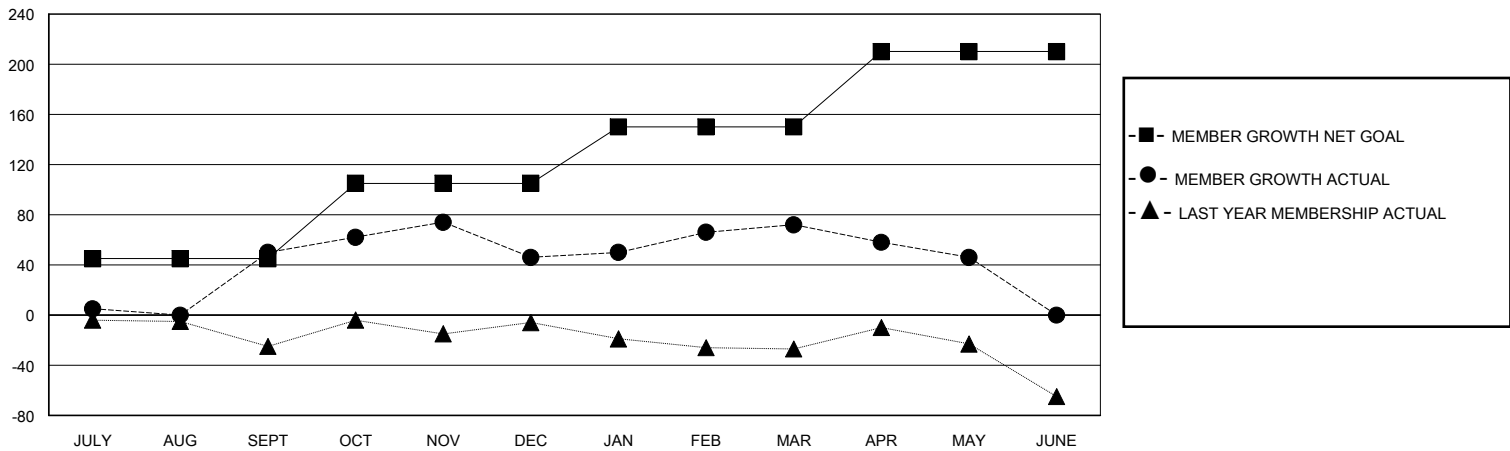
| Clubs                 |               |           |               |
|-----------------------|---------------|-----------|---------------|
| RESULTS FOR 2023-2024 |               |           |               |
| QUARTER               | NEW CLUB GOAL | NEW CLUBS | DROPPED CLUBS |
| JULY/AUG/SEPT         | 1             | 2         | 1             |
| OCT/NOV/DEC           | 0             | 0         | 0             |
| JAN/FEB/MAR           | 1             | 0         | 0             |
| APR/MAY/JUNE          | 0             | 0         | 0             |

| Members               |                        |                      |  |
|-----------------------|------------------------|----------------------|--|
| RESULTS FOR 2023-2024 |                        |                      |  |
| QUARTER               | MEMBER GROWTH NET GOAL | MEMBER GROWTH ACTUAL | DROPPED MEMBERS ACTUAL (including transfers) |
| JULY/AUG/SEPT         | 45                     | 99                   | 44   |
| OCT/NOV/DEC           | 60                     | 66                   | 67   |
| JAN/FEB/MAR           | 45                     | 59                   | 33   |
| APR/MAY/JUNE          | 60                     | 35                   | 54   |

GOALS AND ACTUAL NEW CLUBS CUMULATIVE



GOALS AND ACTUAL MEMBERS CUMULATIVE



DROPPED CLUBS: 1

38 CLUBS OF 51 ADDED 1 OR MORE NEW MEMBERS

GENDER DISTRIBUTION

MALE 844 (61.97%)  
FEMALE 517 (37.96%)

DROPPED MEMBERS

|                |            |
|----------------|------------|
| DECEASED       | 13         |
| CLUB CANCELLED | 0          |
| OTHER          | 185        |
| <b>TOTAL</b>   | <b>198</b> |

[CLICK HERE FOR CUMULATIVE MEMBERSHIP DATA](#)

|                                 |     |
|---------------------------------|-----|
| TOTAL FAMILY UNIT MEMBERS       | 161 |
| FAMILY MEMBERS PAYING HALF DUES | 81  |